

# Accueil Clinique

The doctor has determined that your health problem is semi-urgent.

To confirm his/her diagnosis, he/she requires radiological examinations or a consultation with a medical specialist.

He/she is referring you to Accueil Clinique at Hôpital du Sacré-Cœur-de-Montréal, where a nurse will organize the care and services you need.

Before you leave the office, the doctor will notify the nurse at Accueil Clinique that you will be arriving at the hospital.

The nurse may decide to postpone your hospital visit and to schedule an appointment for you instead.

Make sure you can be reached easily and quickly between 8 a.m. and 4 p.m., Monday to Friday

## 1 Before you leave the office, the doctor will give you:

- a copy of his/her medical note;
- a medical requisition form;
- in some cases, a prescription for a community pharmacy.

## 3 Hôpital Sacré-Cœur-de-Montréal 5400 Gouin Blvd. West Tel.: 514 338-2222, ext. 7300

### TO GET TO ACCUEIL CLINIQUE

- Take main entrance G on Gouin Blvd.;
- Head in the direction of **Wing A**;
- Take elevator **A-1** or **A-2** to go to the basement;
- Continue along the corridor in **Wing A**;
- Accueil Clinique is located in room **A-0250**.

### TO FIND PARKING

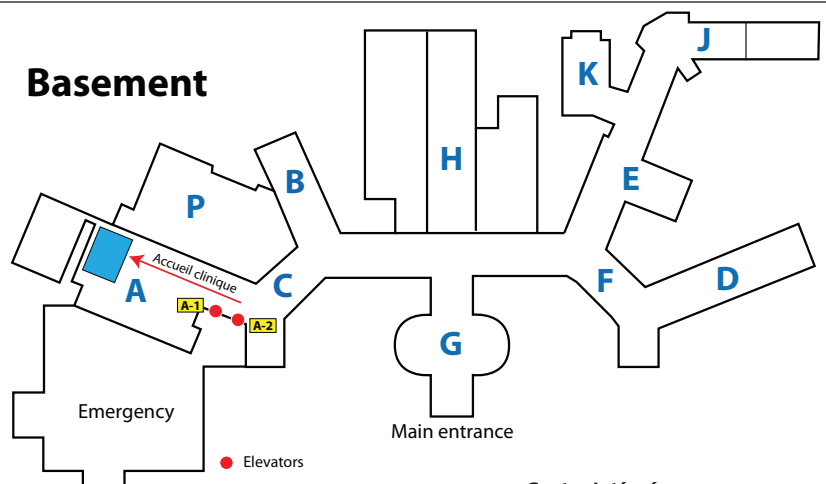
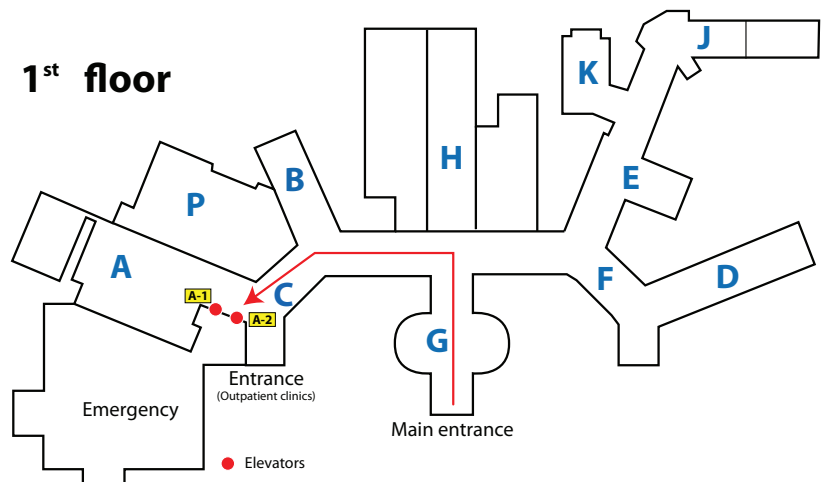
- The parking areas to the left and right of the main entrance are reserved for visitors.
- Parking rates
  - 0-30 minutes: Free
  - 31-60 minutes: \$ 8
  - 61-90 minutes: \$ 13
  - 91-120 minutes: \$ 16
  - 121-240 minutes: \$ 18
  - 241 minutes or more: \$ 20

*Prices subject to change,  
information available on site.*

## 2 For your visit to Accueil Clinique, you will need to:

- give the nurse the documents you received from the doctor; they are absolutely essential to begin follow-up;
- bring an up-to-date list of your medications;
- bring your RAMQ health insurance card;
- bring your Hôpital Sacré-Cœur-de-Montréal hospital card, if you have one.

## 4 A sign near each elevator identifies the services offered on the floor. Accueil Clinique is located at the end of the corridor in **Wing A**



Centre intégré  
universitaire de santé  
et de services sociaux  
du Nord-de-  
l'île-de-Montréal

Québec

**SERVICES AT ACCUEIL CLINIQUE ARE AVAILABLE FROM 8 A.M. TO 4 P.M.  
MONDAY TO FRIDAY, EXCEPT FOR STATUTORY HOLIDAYS**